



GKN Aerospace
Chem-tronics Inc.

GE CF6-80C2

STAGE 1 FAN BLADE

Reference

Engine Manual 72-21-01

Typical Part Numbers

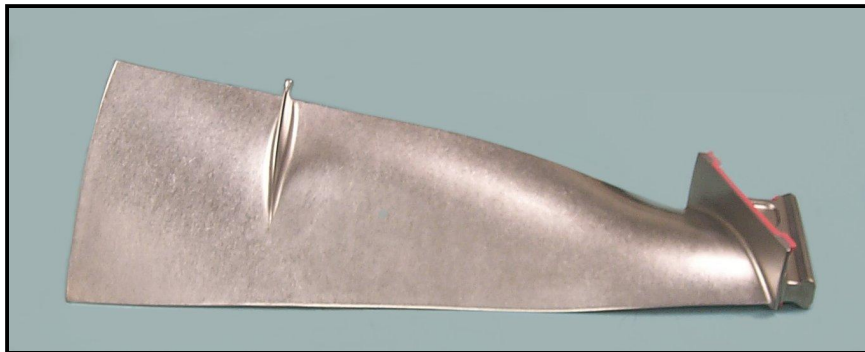
1277M30P06, 1338M51P01 to P05

General Information

Solid Titanium Design, Midspan Shrouds, 38 Blades per Engine

Aircraft Type : A300-600, A310-200/-300, B747-200/-300,

B767-ER/-200/-200ER/-300/-300ER/-400, MD11



1150 West Bradley, El Cajon, CA 92020

www.chem-tronics.com (619) 258-5229

Available Repair Scope

Basic Overhaul:

Engine Manual Inspections

Repair 3 Vibratory Finish Airfoil

Repair 4 Peen Airfoil and Root

Repair 5 Airfoil Blending

Repair 7 Apply Cu-Ni-In Thermal Spray and Dry Film Lubricant Coatings on Root Surfaces

Repair 11 Repair Midspan Shrouds by Blending

Repair 13 Repair Fretting, Nicks, Dents, & Scratches on Dovetail Pressure Faces by Blending

Additional Repairs:

Repair 2 Replace Tungsten Carbide Coating on Midspan Shroud Faces

Repair 6 Replace Dovetail/Platform Seal

Repair 8 Repair Leading & Trailing Edge with Inserts EB Welded in position

Repair 9/15 Recondition Blade Tip by Weld Buildup

Repair 10 Repair Midspan Shroud by Welding

Repair 12 Airfoil Straightening

Repair 14 Repair Fretting on Dovetail Pressure Faces by Machining

Proprietary Information - Revised 03-15-2006